

AFTN: EKMCYOYX

E-mail: FKO-KTP-F-AIM@mil.dk
www.flv.dk/milaim



AIR COMMAND DENMARK
MIL AIM
HERNINGVEJ 30, DK-7470 KARUP J

MIL AIP SUP
09/24
25 OCT 2024

Temporary Restricted Areas EKR601 NEBEL, EKR602 BLAABJERG, EKR603 ORTEN, EKR604 OUTRUP, EKR605 LØNNE, EKR606 BILLUM and EKR607 BLAAVAND

Due to military exercise Temporary Restricted Areas will be established. No traffic permitted in the areas without prior permission from ATC

Temporary Restricted Area EKR601 NEBEL.

Lateral limits:

55 54 00N 008 09 30E - 55 53 45N 008 21 36E - 55 46 50N 008 23 05E - 55 46 13N 008 15 45E
55 48 01N 008 13 50E - 55 52 00N 008 13 42E - 55 51 58N 008 09 56E - 55 54 00N 008 09 30E.

Vertical limits:

SFC - 2500 FT MSL.

Temporary Restricted Area EKR602 BLAABJERG.

Lateral limits:

55 47 00N 008 00 55E - 55 47 03N 008 10 56E - 55 46 13N 008 11 05E
55 41 28N 008 04 00E - 55 47 00N 008 00 55E.

Vertical limits:

SFC - 2500 FT MSL.

Temporary Restricted Area EKR603 ORTEN.

Lateral limits:

55 40 38N 008 17 05E - 55 42 02N 008 25 55E - 55 37 08N 008 29 00E
55 36 58N 008 22 28E - 55 37 07N 008 17 58E - 55 40 38N 008 17 05E.

Vertical limits:

SFC - 2500 FT MSL.

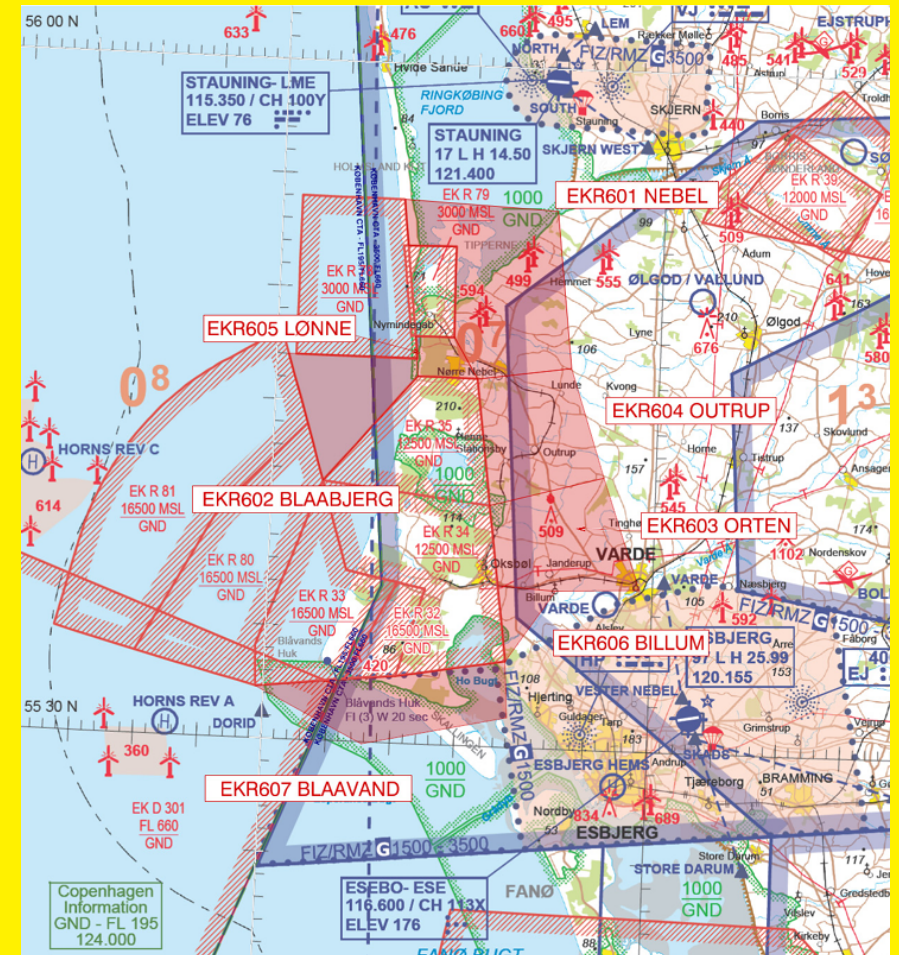
Temporary Restricted Area EKR604 OUTRUP.

Lateral limits:

55 46 13N 008 15 45E - 55 46 50N 008 23 05E - 55 42 02N 008 25 55E
55 40 38N 008 17 05E - 55 46 13N 008 15 45E.

Vertical limits:

SFC - 2500 FT MSL.



AFTN: EKMCYOYX

E-mail: FKO-KTP-F-AIM@mil.dk
www.flv.dk/milaim



AIR COMMAND DENMARK
MIL AIM
HERNINGVEJ 30, DK-7470 KARUP J

MIL AIP SUP
09/24
25 OCT 2024

Temporary Restricted Area EKR605 LØNNE.

Lateral limits:

55 47 59N 008 10 46E - 55 48 01N 008 13 50E - 55 46 13N 008 15 45E - 55 46 13N 008 11 05E - 55 47 03N 008 10 56E - 55 47 59N 008 10 46E.

Vertical limits:

SFC - 2500 FT MSL.

Temporary Restricted Area EKR606 BILLUM.

Lateral limits:

55 37 07N 008 17 58E - 55 36 58N 008 22 28E - 55 33 48N 008 18 45E - 55 37 07N 008 17 58E.

Vertical limits:

SFC - 2500 FT MSL.

Temporary Restricted Area EKR607 BLAAVAND.

Lateral limits:

55 32 18N 007 59 23E - 55 32 37N 008 04 47E - 55 32 57N 008 10 17E - 55 33 48N 008 18 45E - 55 31 20N 008 19 03E - 55 29 55N 008 07 51E - 55 32 18N 007 59 23E.

Vertical limits:

SFC - 2500 FT MSL.

Activity period:

Will be published by NOTAM.

Activities are expected:

04 NOV 2024 0800Z - 08 NOV 2024 1100Z.

REF AIP: MIL AIP ENR 5.1.

Valid until further notice.